



THE NEW CHALLENGES OF O&M RELATED TO URBAN AND TOURISM ROPEWAYS

Mr Michaël FAUCHÉ,
Services Director





6 years ago :

NY (Aerial Tramway)

CAIRO (APM)

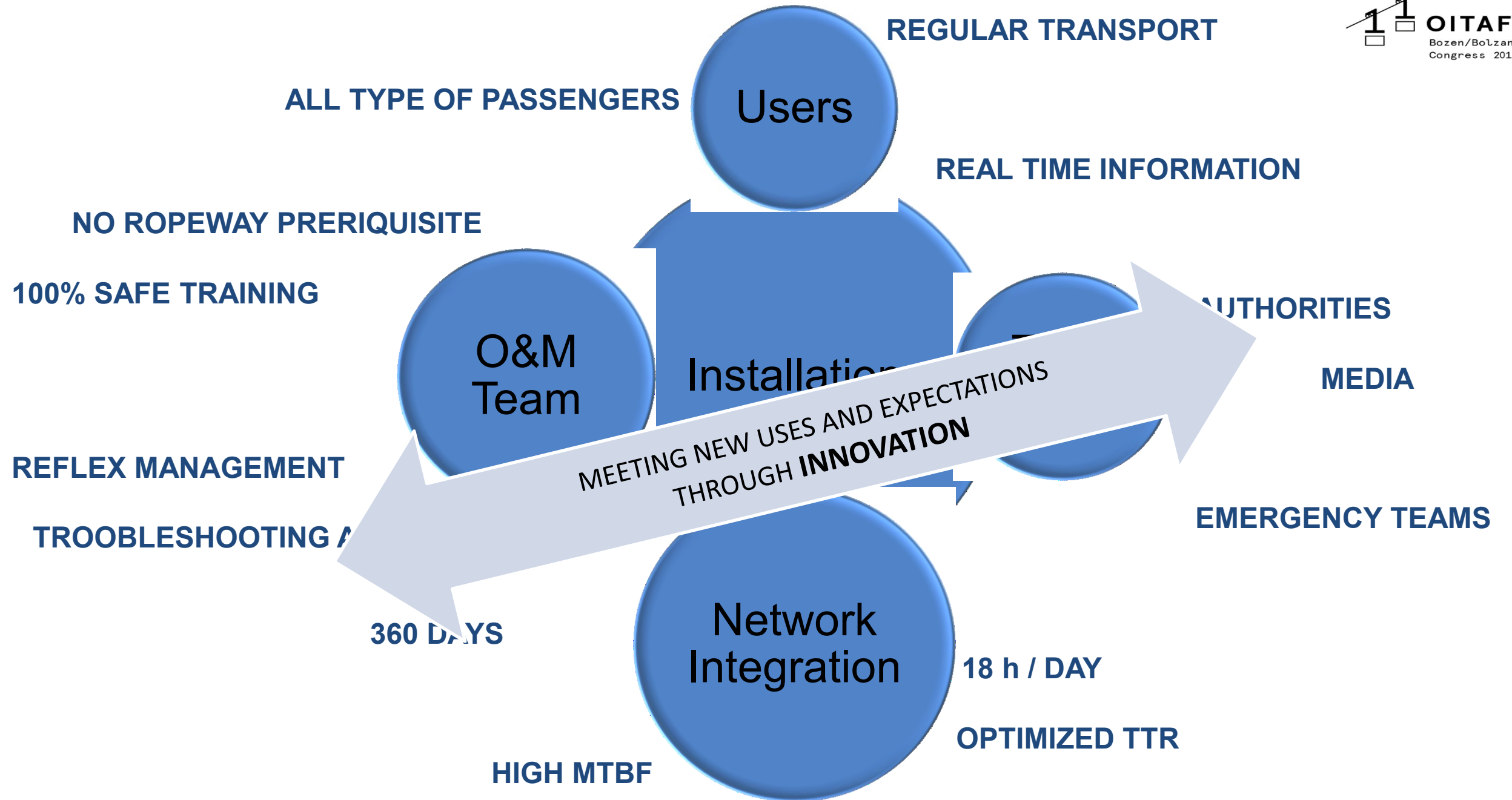


CEA (Horizontal Funicular)

Passengers and Customer satisfied, KPI reached

Renewal of Trust for more than 5 new years









LRU
APPROACH

REDUNDANCY

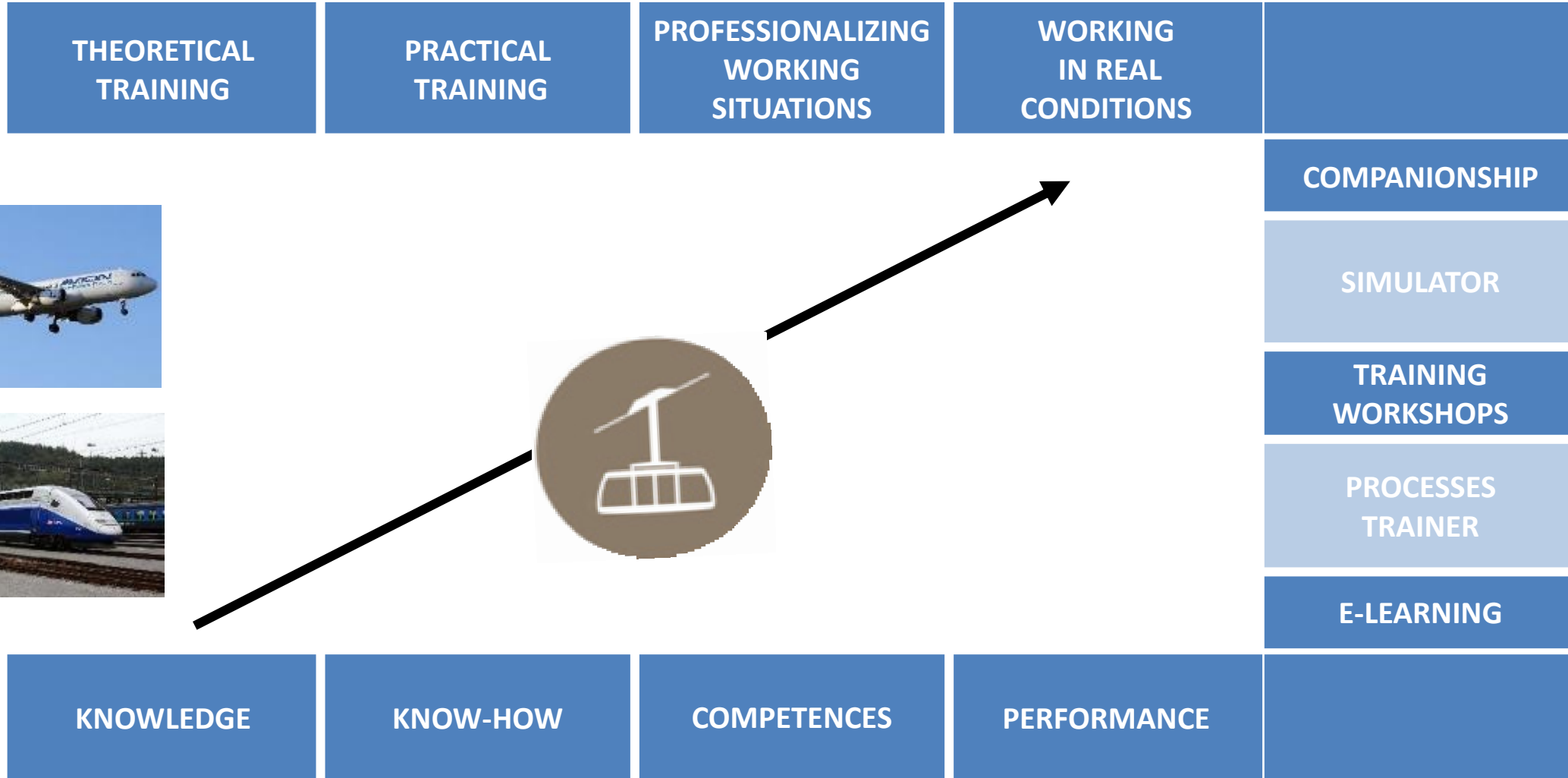
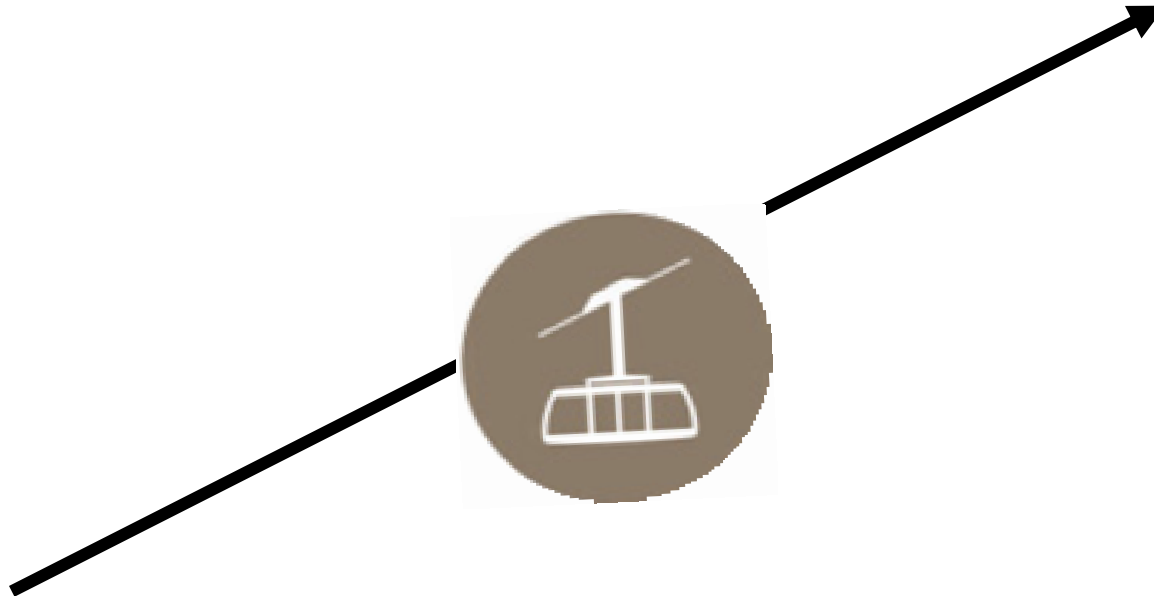


DEGRADED
MODE:
designed for bad
weather
condition

INTEGRATED
TROUBLE
SHOOTING



PILOT





Menu Out X

Fonctionnement

Les deux moteurs de secours sont alimentés par de l'électricité.

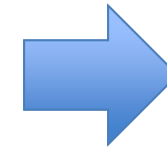
Ils sont pilotés depuis le poste de conduite.



Motorisation de secours



E-LEARNING PLATFORM
PROCESSES TRAINER
SIMULATOR OF ROPEWAY SYSTEM



COURSES COMPLETION
DYNAMIC DELIVERY
DYNAMIC ASSESSMENT

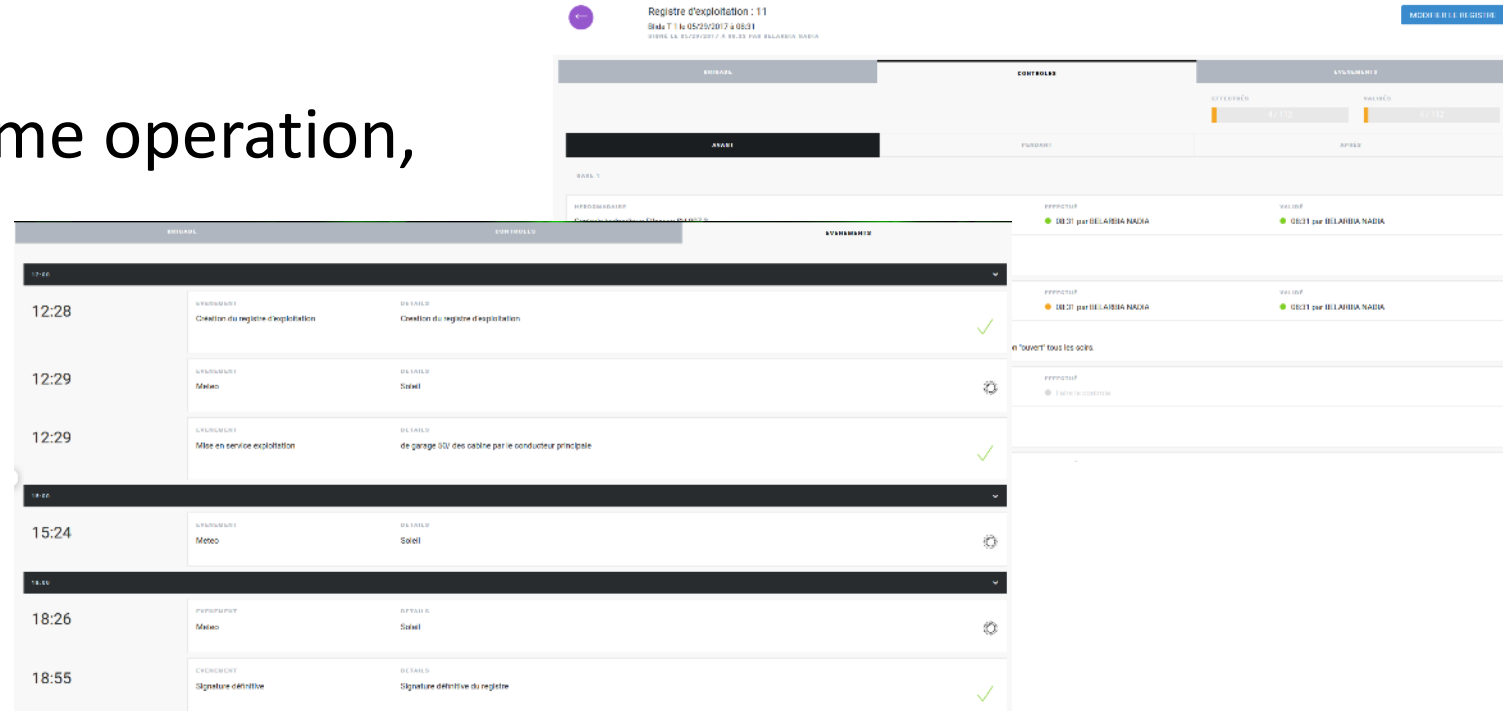




Dedicated maintenance approach and maintenance planning,

Optimized tools for Hidden time operation,

Full traceability of Operation and Maintenance



The screenshot displays a software interface for maintenance management. At the top, it shows 'Registre d'exploitation : 11' and a date range 'Du 11/05/2017 à 05:31'. Below this, there are tabs for 'PROFIL', 'CONTROLE', and 'EVENEMENTS'. The main area is divided into two sections: a log on the left and a control panel on the right.

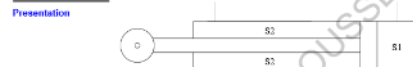
HEURE	OPERATION	DETAILS	STATUT
12:28	Creation du registre d'exploitation	Creation du registre d'exploitation	✓
12:29	Meteo	Soleil	⚙️
12:29	Mise en service exploitation	de garage 00/ des cabine par le conducteur principale	✓
15:24	Meteo	Soleil	⚙️
18:26	Meteo	Soleil	⚙️
18:55	Signature definitive	Signature definitive du registre	✓

The right side of the interface shows a control panel with 'OPERATIONS' and 'SIGNALS' tabs. It lists 'OPERATION' and 'VALUER' with status indicators (green and yellow) and names like '00:01 par BELAHIBIA NADIA'.

O&M Methodology Easy access to relevant documentation

Presentation of the hydraulic cylinder double-acting

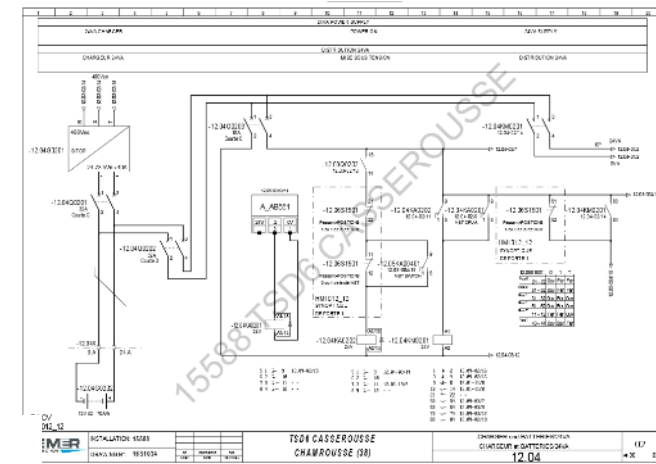
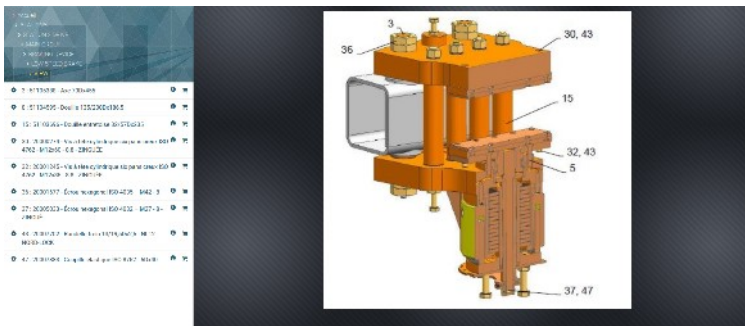
Prior information Before using the equipment or working on it, it is essential to consult module B "Important information". For any information concerning the production of this manual or its summary, see sheet A300 or A301.



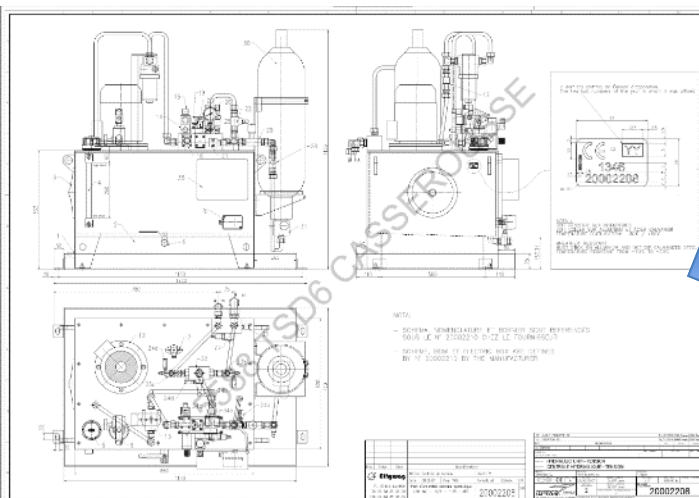
The hydraulic cylinder double-acting works using two chambers, a pressure chamber (S1) and a back-pressure chamber (S2).

Function The hydraulic cylinder is used for tensioning the rope, which it does by moving the tensioning carriage and the rollers that is attached to it. The movement of the hydraulic cylinder is controlled by a hydraulic tension control unit. The hydraulic tension control unit is covered in another manual.

Functional sequence description If the pressure in the pressure chamber (S1) is raised, the piston rod is pushed out. The back-pressure chamber is emptied. If the back-pressure chamber (S2) is pressurised, the piston rod is pushed inwards. The pressure chamber is emptied. Blocking the flow out of either chamber prevents the piston rod from moving.



Hydraulic cylinder double-acting - Equipment presentation - a10_V2V/105_en



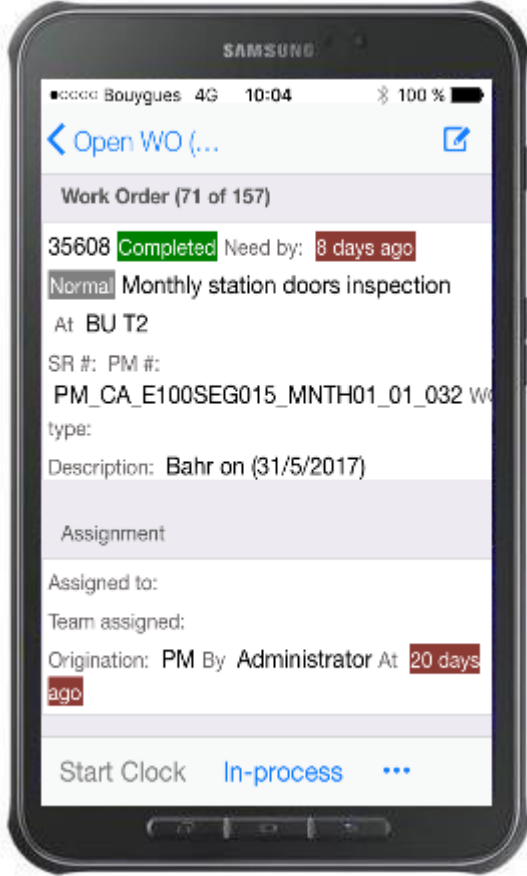
15588TS06 CASSEROUSE

15588TS06 CASSEROUSE



As other means of transportation...

- ✓ Remote monitoring and assistance,
- ✓ Real time analysis and troubleshooting,
- ✓ From Preventive to Predictive maintenance through a deep knowledge
- ✓ Infotainment to passengers.

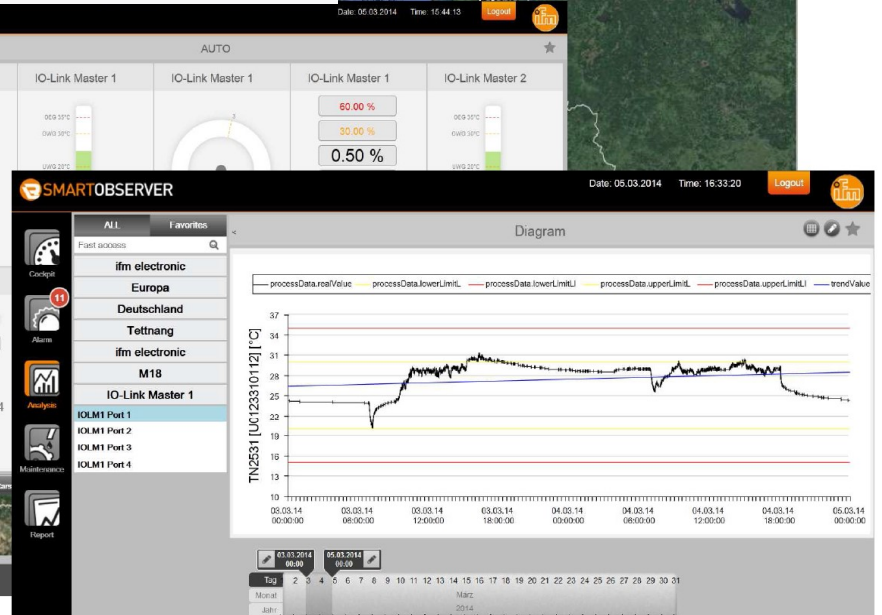
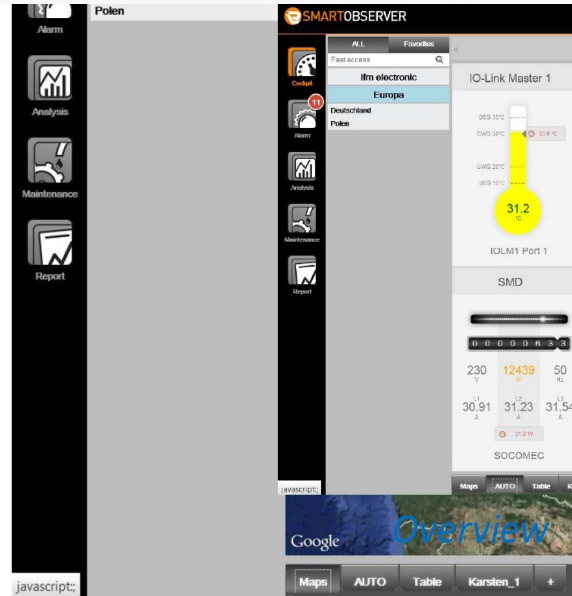
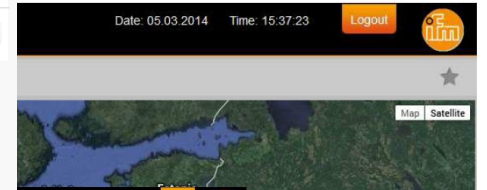


HyperView

-TOUS LES APPARELS-

CETTE PAGE VA SE RÉACTUALISER DANS 6 SECONDES

Appareil	Marché Avéré	Vitesse cible en m/s	Vitesse cible en %	Couple moteur	Taux d'occupation	Nombre de passagers	Débit	Vitesse vent	Nombre d'arrêts	Temps d'arrêt
TC Bab El Qued - En Construction	●	0 m/s	0 %	0 %	0 %	0	0 p/h	0 m/s	1	12:00:00
TPH FI Madrasa	●	0 m/s	0 %	0 %	0 %	672	336 p/h	1.8 m/s	0	00:00:00
TPH Notre Dame d'Afrique - En cours de rénovation	●	0 m/s	0 %	0 %	0 %	0	0 p/h	0 m/s	0	00:00:00
IC Blida F1	●	4.1 m/s	81 %	24.8 %	0 %	10	0 p/h	1.5 m/s	3	00:50:59
IC Blida F2	●	4 m/s	80 %	16.5 %	0 %	0	0 p/h	5.5 m/s	7	00:09:40
TPH Memorial	●	0 m/s	0 %	0 %	0 %	160	240 p/h	0.9 m/s	0	00:00:00
TPH Palais de la Culture	●	0 m/s	0 %	0 %	0 %	70	60 p/h	1.8 m/s	0	00:00:00





POMA

THANK YOU
FOR YOUR
ATTENTION

michael.fauche@poma.net